

CS 75 PRO SETUP

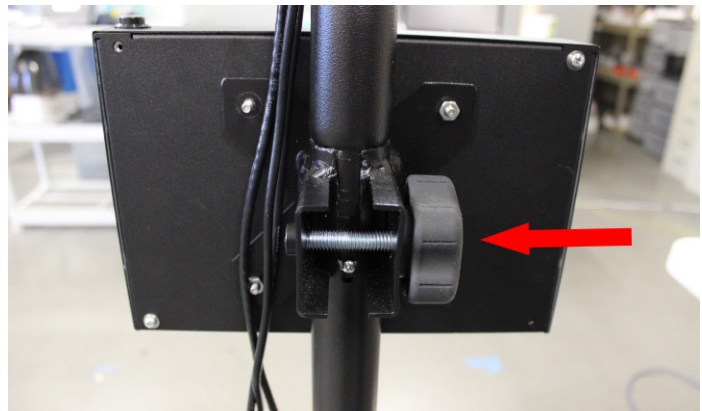
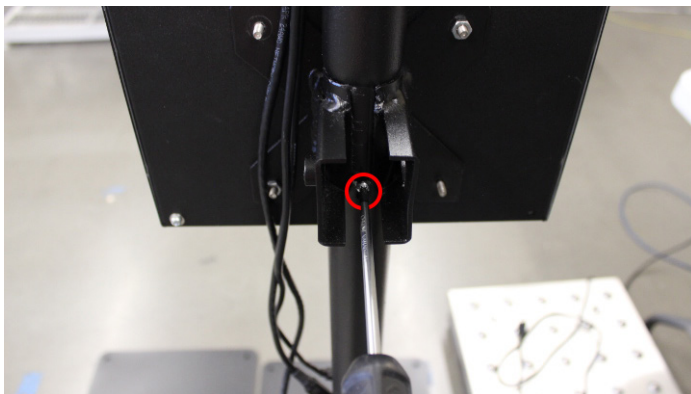
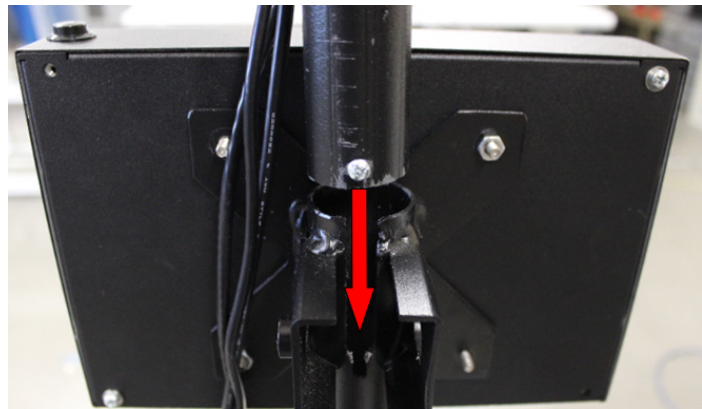
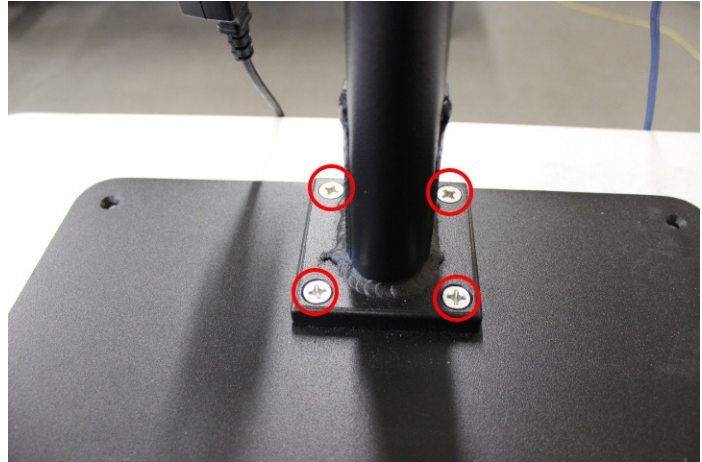
The Cubiscan 75 Pro is almost completely assembled when shipped. You only need to remove the shipping materials, attach the post to the base platform, and bolt the platform down.

Attaching the post to the platform

1. Attach the lower post to the platform using the four large screws.

The stand must be attached to the platform for the height calibration to work properly. The Cubiscan 75 Pro will not work if it is mounted any other way.

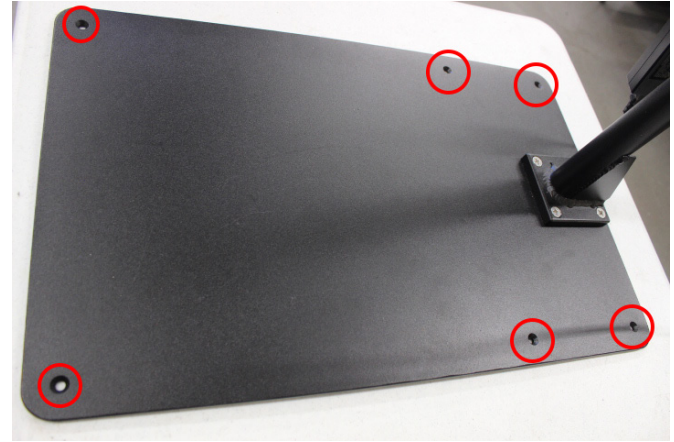
2. Slide the top post into the lower post. Ensure the screw is loose enough to slide into the channel.
3. Tighten the top post screw using a phillips screwdriver.
4. Slide the large-grip plastic-head thumb screw through the holes on the brace and twist clockwise to tighten.
5. Continue to turn until hand tight. Do not over tighten as this may strip the threads.



Bolting the platform in place

Bolting the platform in place is required to prevent the Cubiscan 75 Pro from falling or being knocked over.

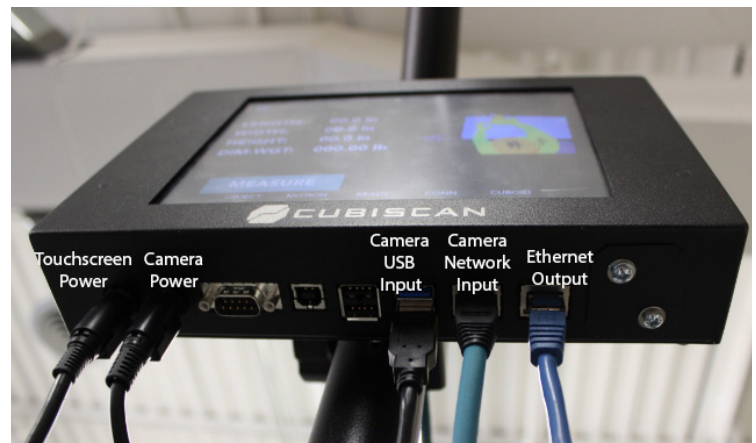
1. Place the Cubiscan 75 Pro where you will be using it. Typically, the Cubiscan 75 Pro is placed on a table or similar surface.
2. Mark where you will be drilling the six holes. The image below shows where the six holes in the Cubiscan 75 Pro platform are located
3. Move the Cubiscan 75 Pro to the side and drill the holes.
4. Move the Cubiscan 75 Pro back into place and secure it using the hardware Provided. The washer will go flush against the underside of the table (or the surface to which you are bolting the Cubiscan 75 Pro), followed by the lock washer and nut.



Connecting cables

Take the following steps to connect cables to the Cubiscan 75 Pro:

1. Locate the camera cables (camera power, USB input, network input). Attach the cables in their appropriate ports on the bottom of the touchscreen as shown in the image.
2. Connect the touchscreen power cable to the far left port.
3. Connect the other end of the power cable to a standard power outlet.



4. Use the power button located on the top right corner of the touchscreen to turn the Cubiscan 75 Pro on. Allow the Cubiscan a few minutes to power up the first time you turn it on.
5. If connecting to the Ethernet, connect the Ethernet cable in the far right port. This port is for other connection such as the network or computer.

