

QBIT-DB™ DIGITAL CAMERA INSTALLATION

QUICK REFERENCE GUIDE

Q I

This quick reference guide provides instructions for installing and configuring a digital camera with Qbit-DB. To use a digital camera with Qbit-DB, you will need to install the camera software, load the camera driver, and connect the camera to Qbit-DB.

Installing the Camera Software

- Step 1. Load the solution disk that came in the digital camera box.
- Step 2. Click **RunSETUP.EXE**.
- Step 3. Select the appropriate area, country, and language.
- Step 4. Select **Custom Installation**.
- Step 5. Unselect every option except **EOS Utility**.
- Step 6. When you are finished with the installation process click **Finish**.

Loading the Camera Driver

- Step 1. Use the camera to USB cable to connect your camera to your computer.
- Step 2. Turn the camera on (make sure it is in Auto mode).
- Step 3. The driver will automatically be installed on your computer.

Connecting the Camera to Qbit-DB

- Step 1. Open the EOS Utility software. Click **Preferences....**
- Step 3. Under the Basic Settings tab, select **Show main window**.
- Step 4. Under the Destination Folder tab, select CubiScan\TempImages as the destination folder. Deselect all option boxes. Click **OK** to exit.
- Step 6. From the EOS Utility software home screen, click **Camera Settings/ Remote Shooting**. This will bring up a window that allows you to capture images remotely using your computer. Minimize this window for the next few steps.
- Step 7. Open Qbit-DB and navigate to the Tools > Options > Camera tab.
- Step 8. Under Digital Camera Options, enable the field **Enable Digital Camera Snapshots**. Click **OK** when you are finished.
- Step 9. Enter an item number into the Qbit-DB Item Number (primary) field.
- Step 10. Maximize the remote image capturing window and click the round, black button located in the top-right corner of the window. This should cause the camera to take a picture.

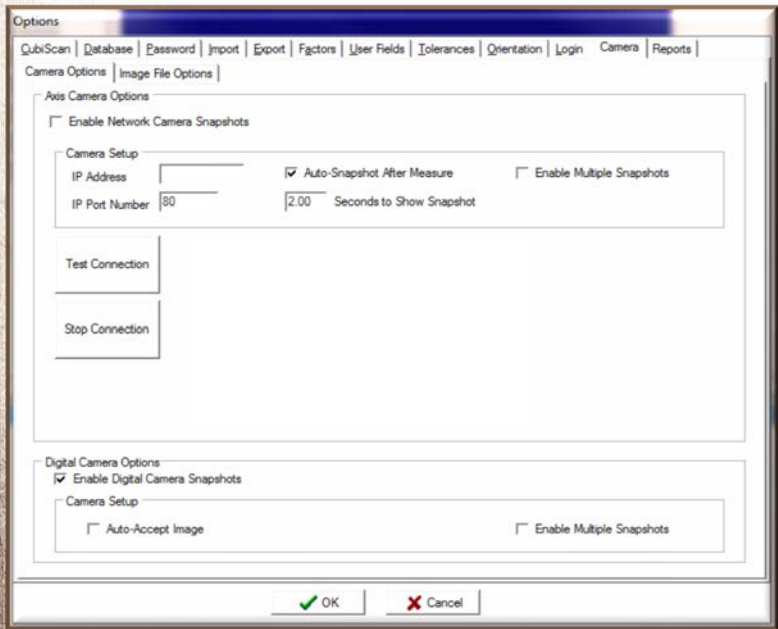
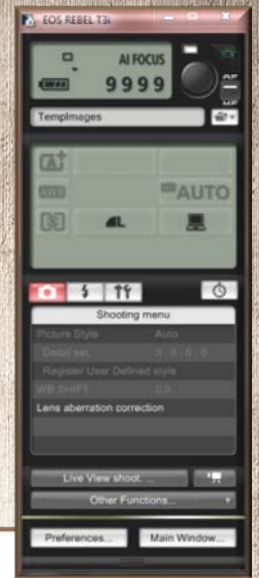


Continued on the next page

If the camera was connected correctly, the image will appear in the camera image window. (Make the camera image window visible by selecting View > Camera Image from the Qbit-DB menu.)

This remote image capturing method only needs to be used when configuring the camera with Qbit-DB, afterwards you can use your preferred method for taking pictures.

Digital Camera Kit Parts List		
Part Number	Description	Quantity/Unit
12461	USB Cable	1
13412	Tripod	1
13414	Integration Software (included with Qbit-DB)	1
14267	Digital Camera (and accessories)	1



For further information on the settings available with the digital camera, or if you are having problems installing or configuring your camera, see the *Qbit-DB User Guide*.



380 South 200 West • P.O. Box 929 • Farmington, Utah • 84025 • USA • 1-800-488-CUBE
 (801) 451-7000 • Fax: (801) 451-0502 • info@cubiscan.com • www.cubiscan.com