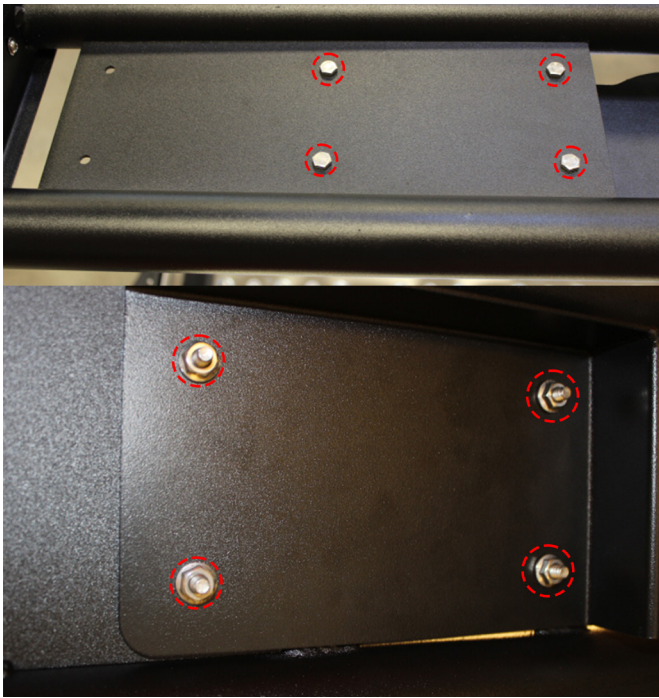


CS 150T CAMERA UPGRADE KIT

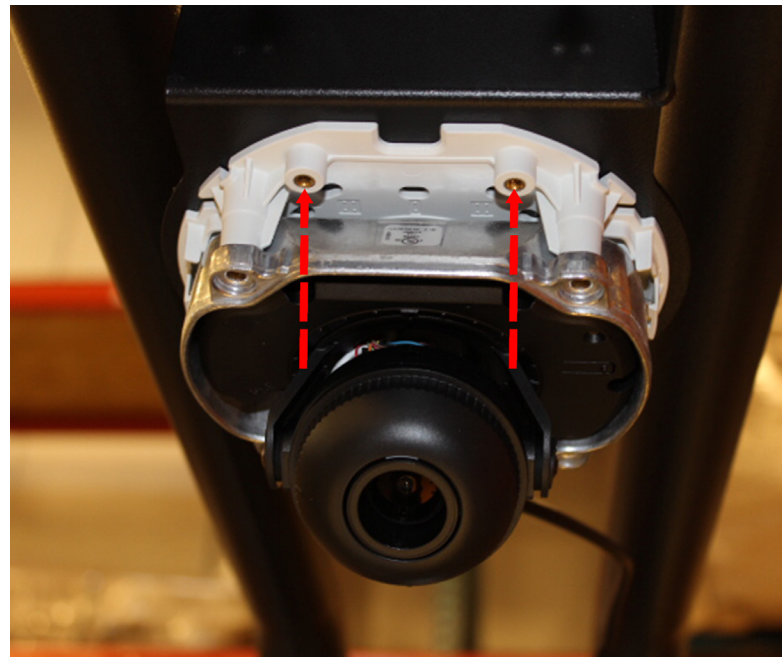
QUICK REFERENCE GUIDE

This quick reference guide provides instructions for installing the Axis Camera from the Cubiscan 150T Camera Upgrade Kit.

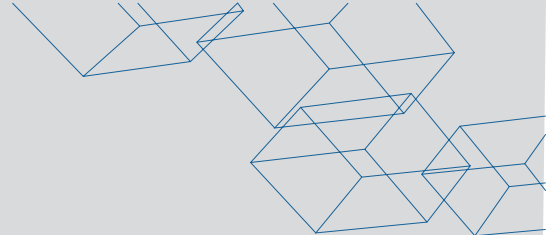
For information on the operation of the 150T, please consult the *Cubiscan 150T Operation Manual*.



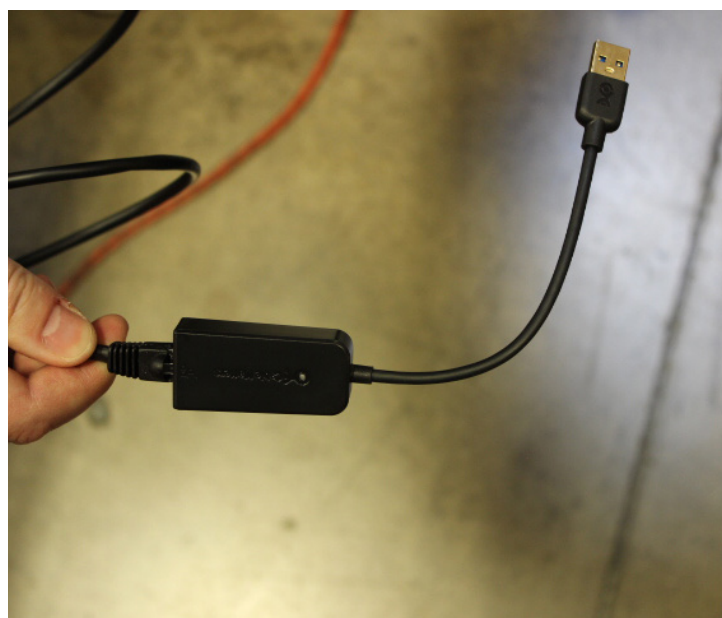
1. Attach the mounting plate to the overhead arm using the 1/4" hex bolts.
2. Position the camera so that the pre-machined mounting holes line up with those on the mounting plate. The cable should run from the back of the camera toward the overhead arm.
3. Once in place secure the camera with the mounting screws provided in the kit.



SETUP CONTINUED



4. Run the cable from the back of the camera unit along the top of the overhead arm and down the back of the arm stand.
5. Use zip ties to secure the cable, preventing it from sagging and interfering with the operation of the CS 150T.
6. The cable can be plugged into any standard USB input.



7. Before placing the cover, adjust the camera to the desired angle. Test the camera with the CS 150T software to ensure images are captured properly.
8. With the camera in the correct position, place the cover, aligning the holes in the cover with those in the camera unit.
9. Secure the cover with the screws from the kit.
10. Finally, remove the plastic dust cover from the camera dome.