

CUBISCAN BARCODE SCANNER KIT

QUICK REFERENCE GUIDE

This quick reference guide provides an overview and instructions for setting up and using the Cubiscan barcode scanner kit. The barcode scanner kit works with the Cubiscan 25, Cubiscan 125, and Cubiscan 325.

In the box

Upon opening the box, you'll find the following items:

- > Handheld barcode scanner (Part 12215)
- > USB to RS-232 cable assembly (Part 16057)
- > Power supply, 5V AC/DC (Part 16058)
- > Barcode Scanner Kit Quick Reference Guide (Part 16059)



1 Cable assembly set up

To set up the Cubiscan barcode scanner kit for use, complete the following steps.

- 1 Plug the RJ45 end of the cable assembly into the barcode scanner.
- 2 Plug the DC power cable into the back of the RS-232 head shell of the cable assembly.
- 3 Plug the RS-232 end of the cable assembly into the serial port of the Cubiscan.



1.1-Plug RJ45 into barcode scanner



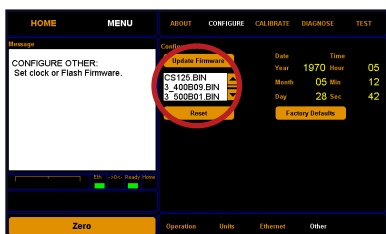
1.2-Power cable plugged into RS-232 head shell.

2 Check firmware

You may need to update the Cubiscan's firmware if it is lower than 3_500B01.BIN. To see which version your Cubiscan is running, tap **Menu**, tap **About**, tap **Version**.

If your Cubiscan's firmware needs updating, follow the steps below.

- 1 On the Cubiscan, tap **Menu**. Tap **Configure**. Tap **Other**.
- 2 Select **3_500B01.BIN** or higher from the firmware menu and tap **Update Firmware**.
- 3 A confirmation window will appear. Select **Yes**.



2.2-Select 3_500B01.BIN.



2.3-Select Yes.

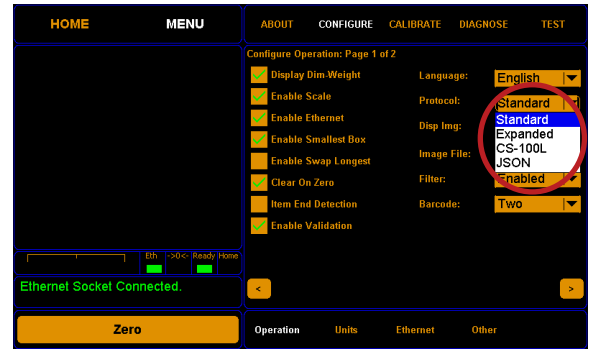
3 Configure Cubiscan

- 1 Tap Menu. Tap Configure. Tap Operation.
- 2 On the barcode dropdown menu, select one or two, depending on the number of barcodes you need to scan.
- 3 When using QBIT-DB, set the Protocol to "Expanded." When using QBIT-Server, set the Protocol to "JSON".

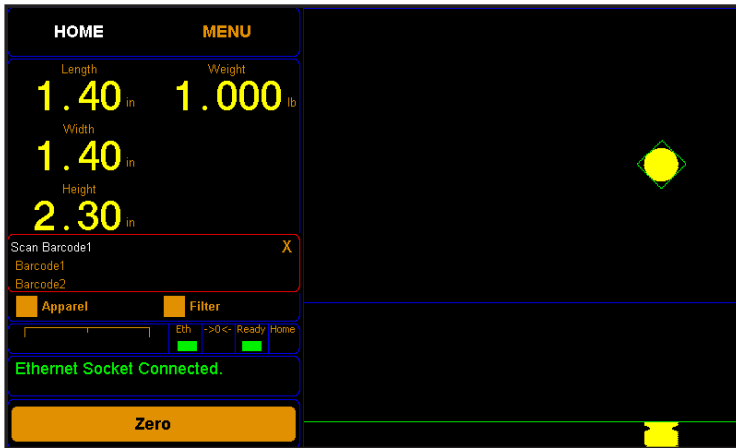
*Note: We can provide individual company recommendations.



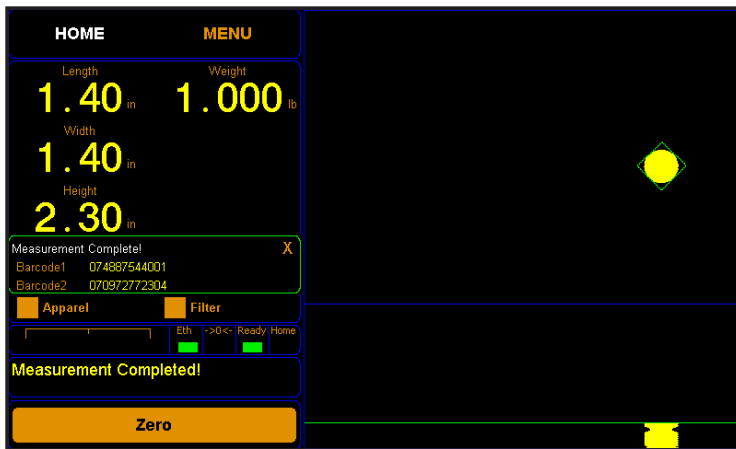
3.2-Select number of barcodes to scan.



3.3-Select appropriate protocol.



4.1-Follow the series of prompts in white text in the red box on the home screen.



4.2, 4.3-The red box will turn green when measurement is complete. You can then remove the item.

4 Using the barcode scanner

- 1 Follow the series of prompts in white text in the red box on the home screen to scan each barcode and measure the item.
- 2 When the measurement is complete, the red box will turn green.
- 3 Remove the item and proceed with the next one.